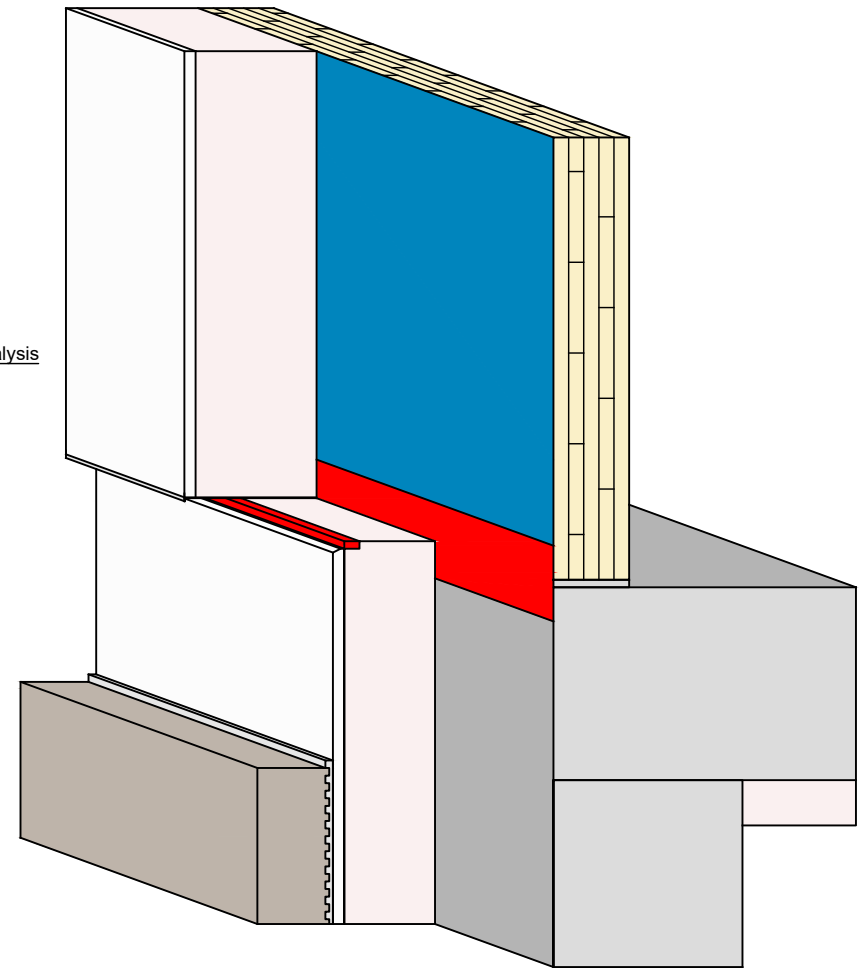
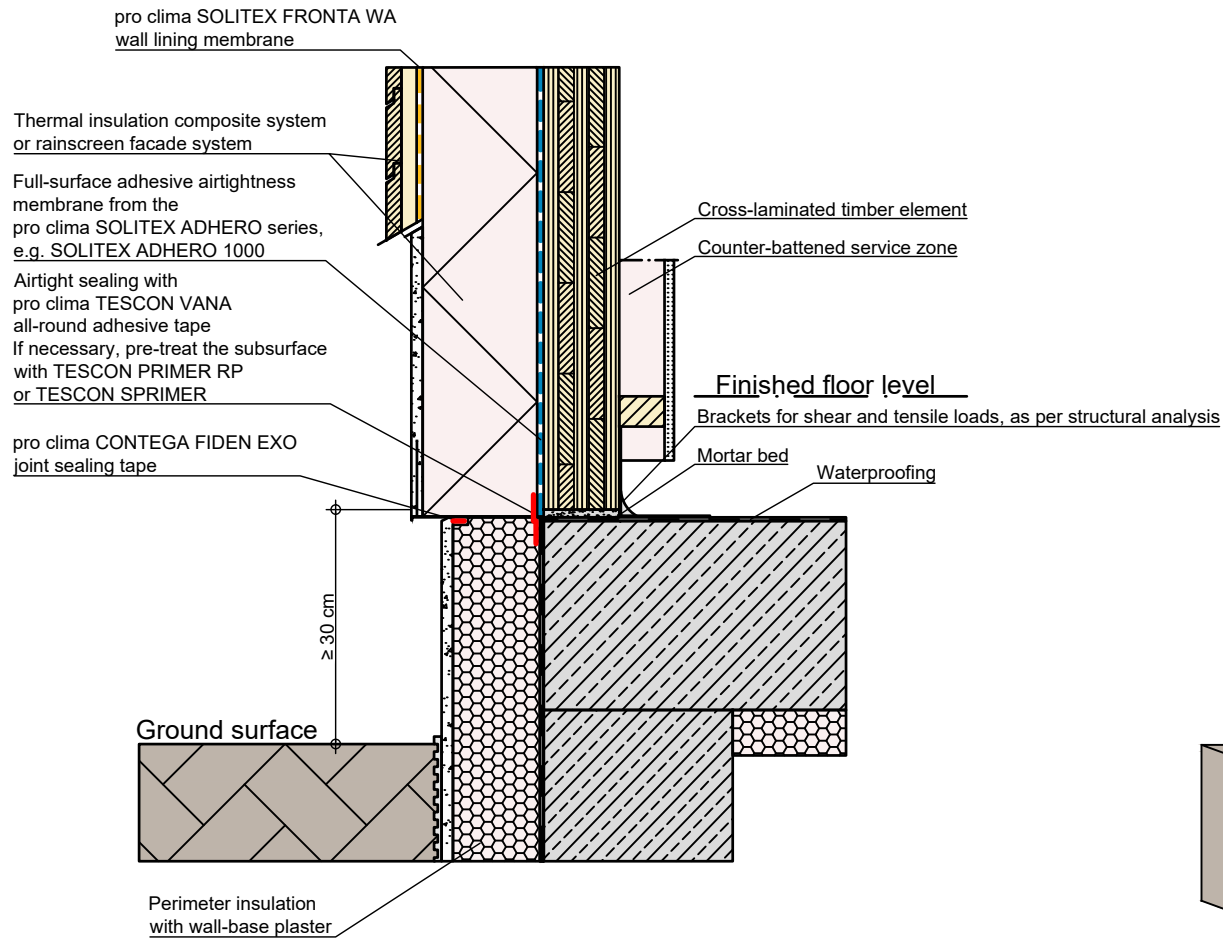


Solid timber construction | Joint at base | 30 cm above ground surface | Var. 1a

Variante 1a: Airtight sealing on the outside with pro clima TESCON VANA. The cross-laminated timber elements must be manufactured to be airtight.

pro clima ... and the insulation is perfect





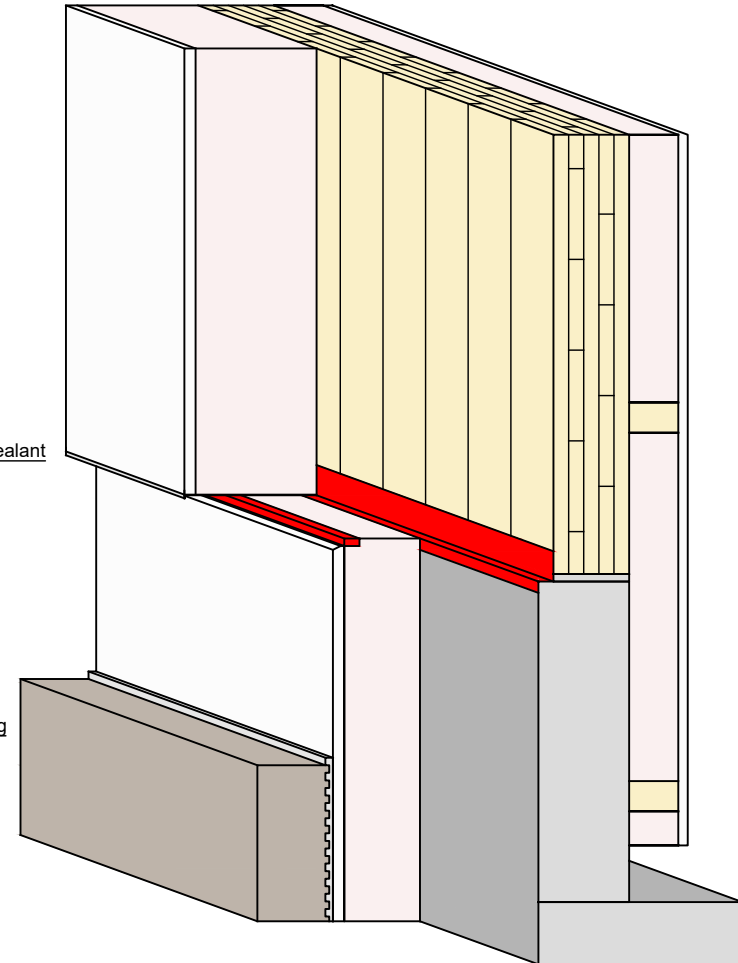
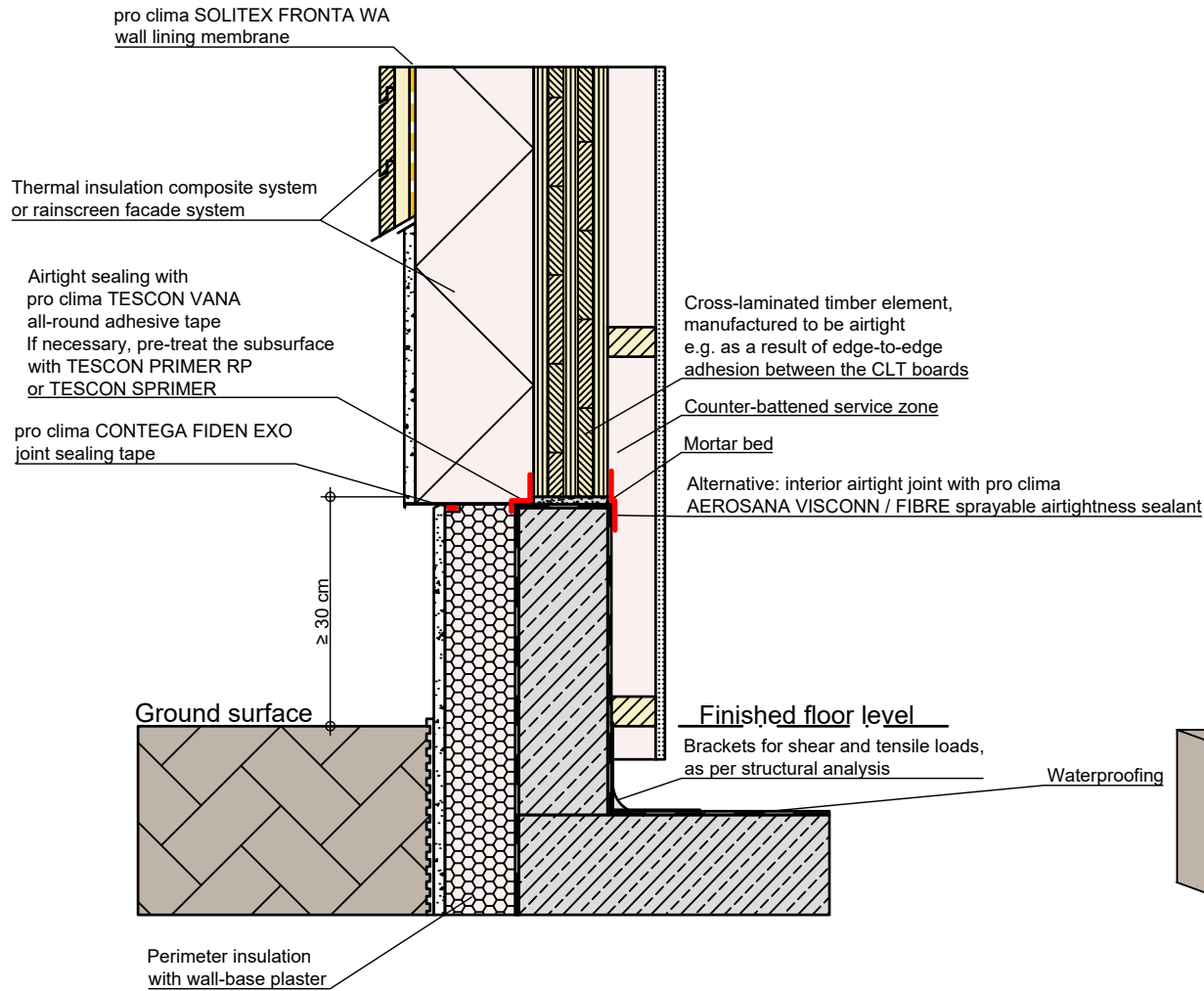
Solid timber construction | Joint at base | 30 cm above ground surface | Var. 2a

Variant 2a: Airtightness with pro clima SOLITEX ADHERO on the exterior side of the cross-laminated timber element

pro clima ... and the insulation is perfect



Typical structural situation to illustrate the airtightness and windtightness layers. When carrying out planning and performing installation on site, please observe the currently applicable technical regulations and the relevant pro clima recommendations for applications and installation. (German version: 09/21; international version 03/23).



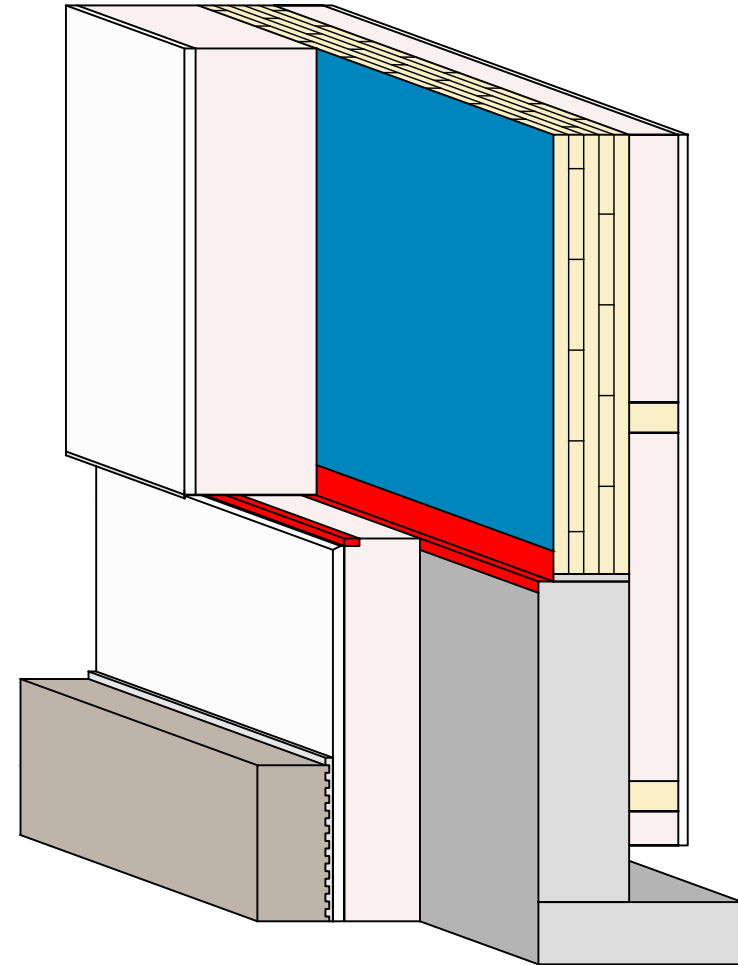
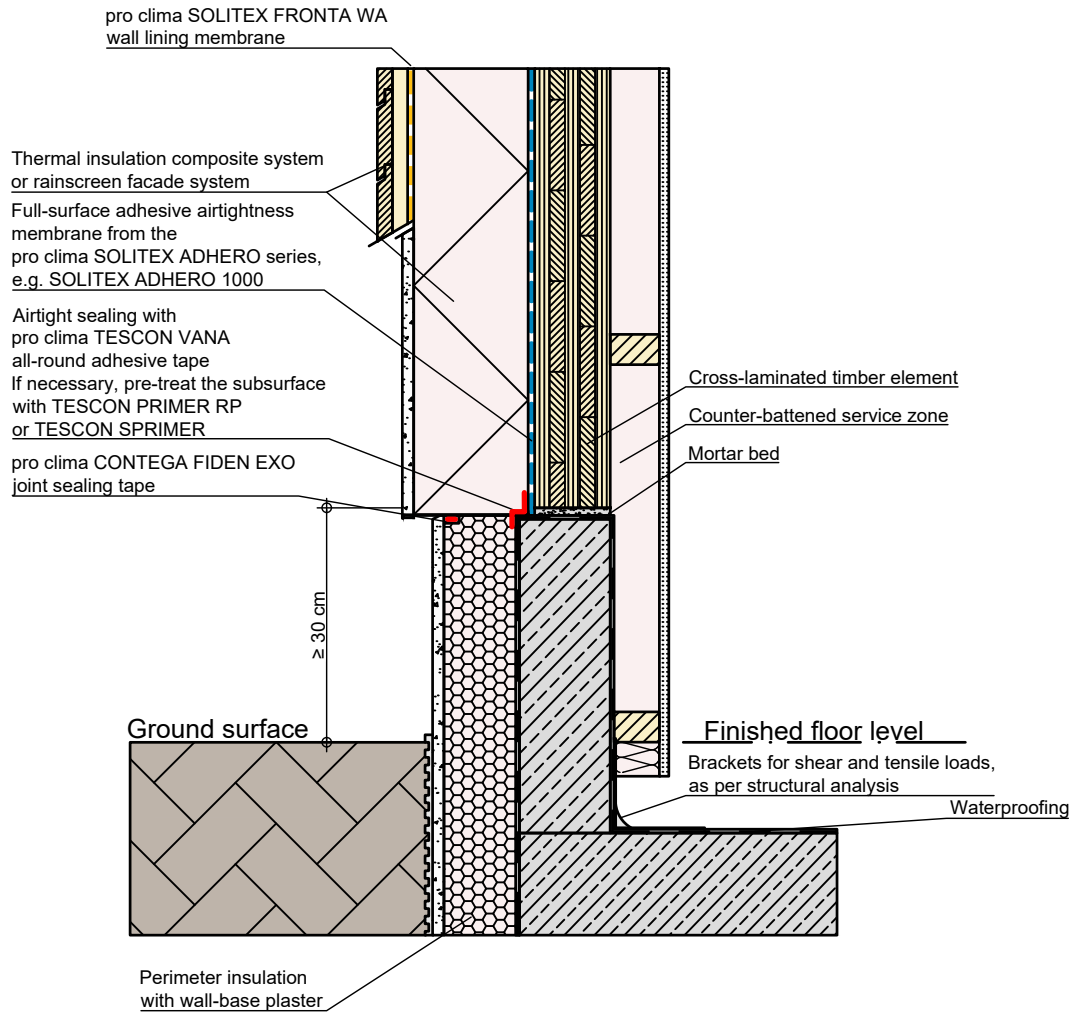
Solid timber construction | Joint at base | 30 cm above ground surface | Var. 1b

Variant 1b: Airtight sealing on the outside with pro clima TESCON VANA. The cross-laminated timber elements must be manufactured to be airtight.

pro clima ... and the insulation is perfect



Typical structural situation to illustrate the airtightness and windtightness layers. When carrying out planning and performing installation on site, please observe the currently applicable technical regulations and the relevant pro clima recommendations for applications and installation. (German version: 09/21; international version 03/23).

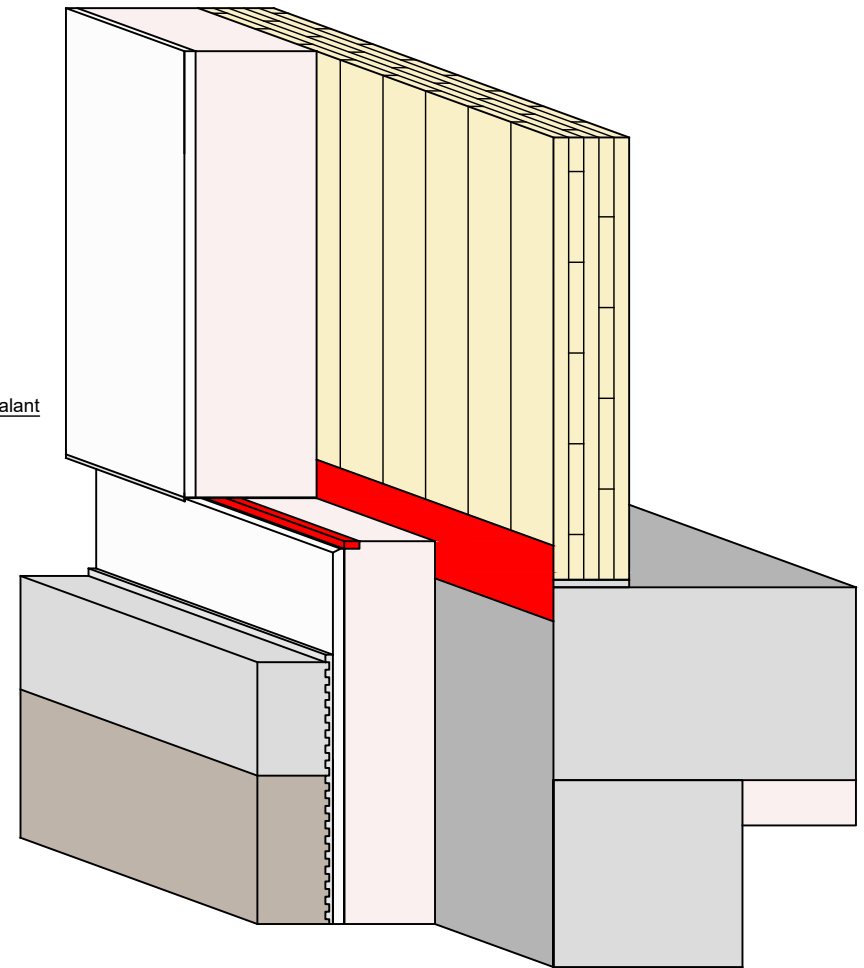
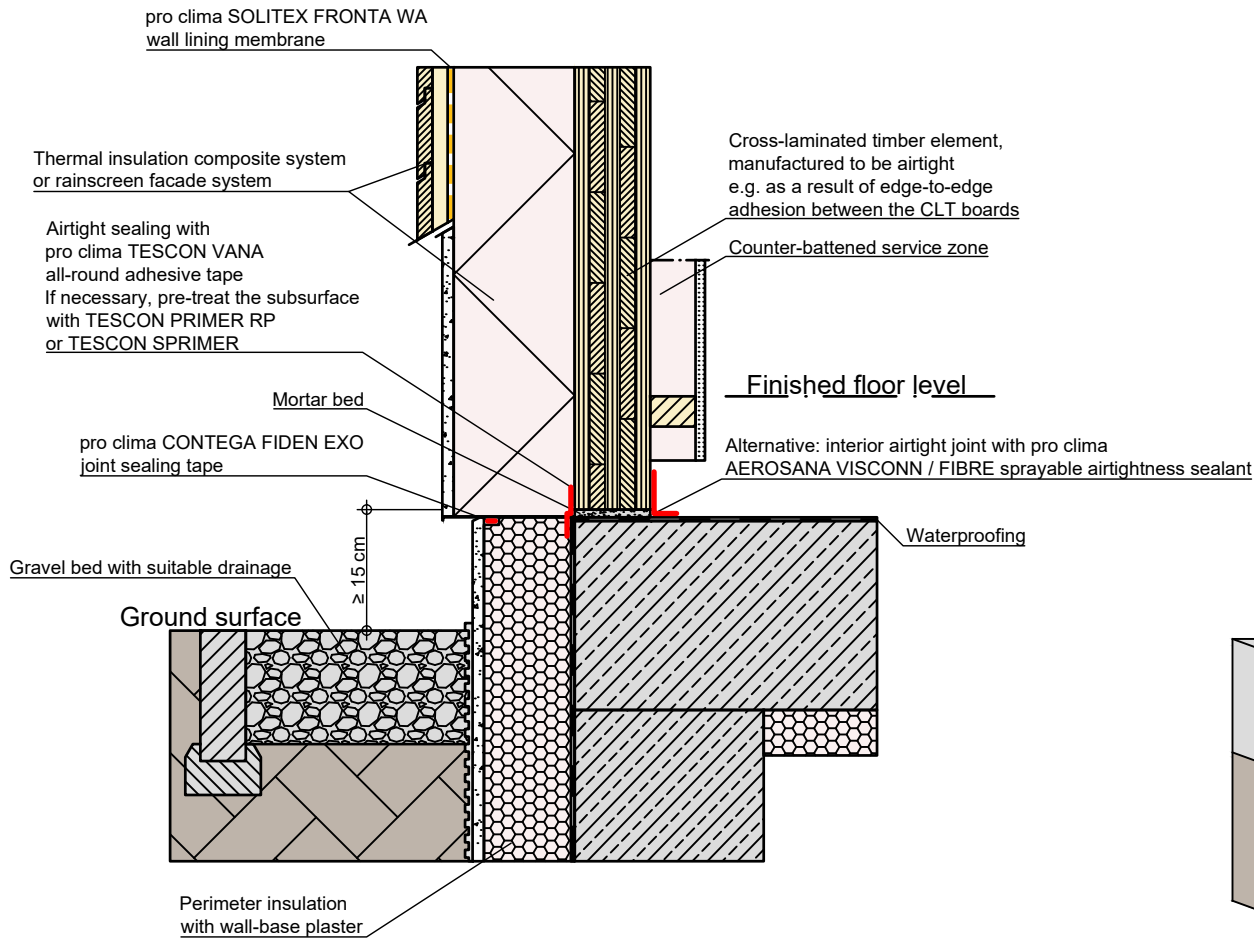


Solid timber construction | Joint at base | 30 cm above ground surface | Var. 2b

Variant 2b: Airtightness with pro clima SOLITEX ADHERO on the exterior side of the cross-laminated timber element

pro clima ... and the insulation is perfect



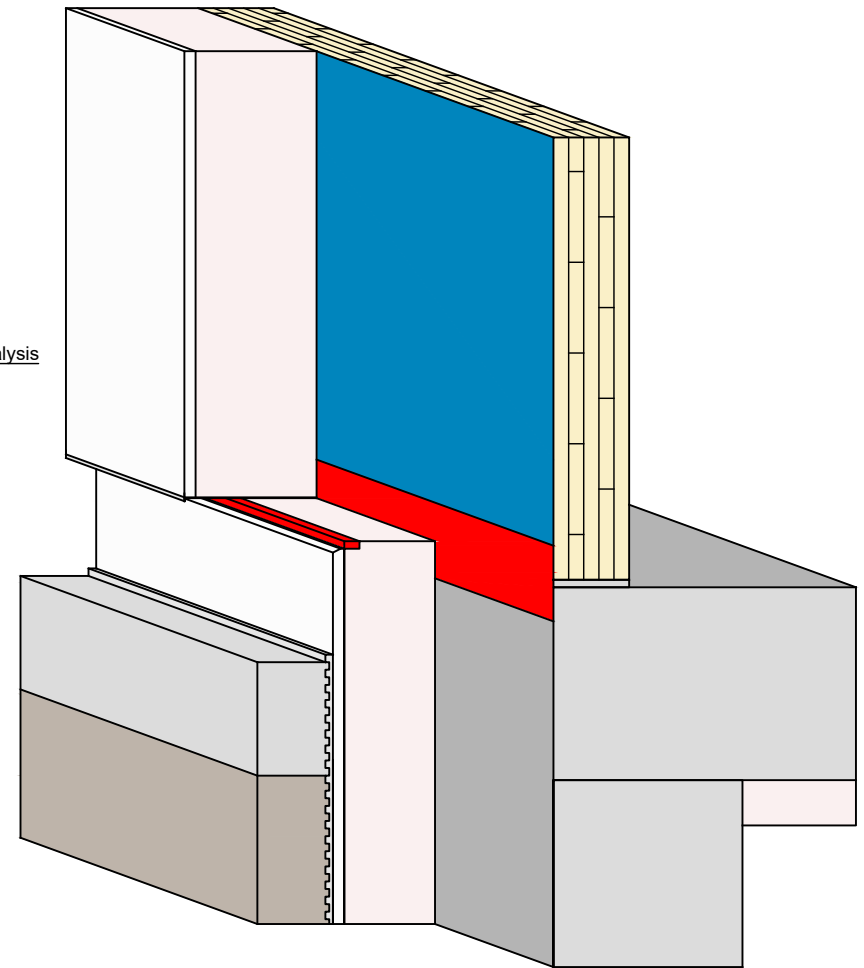
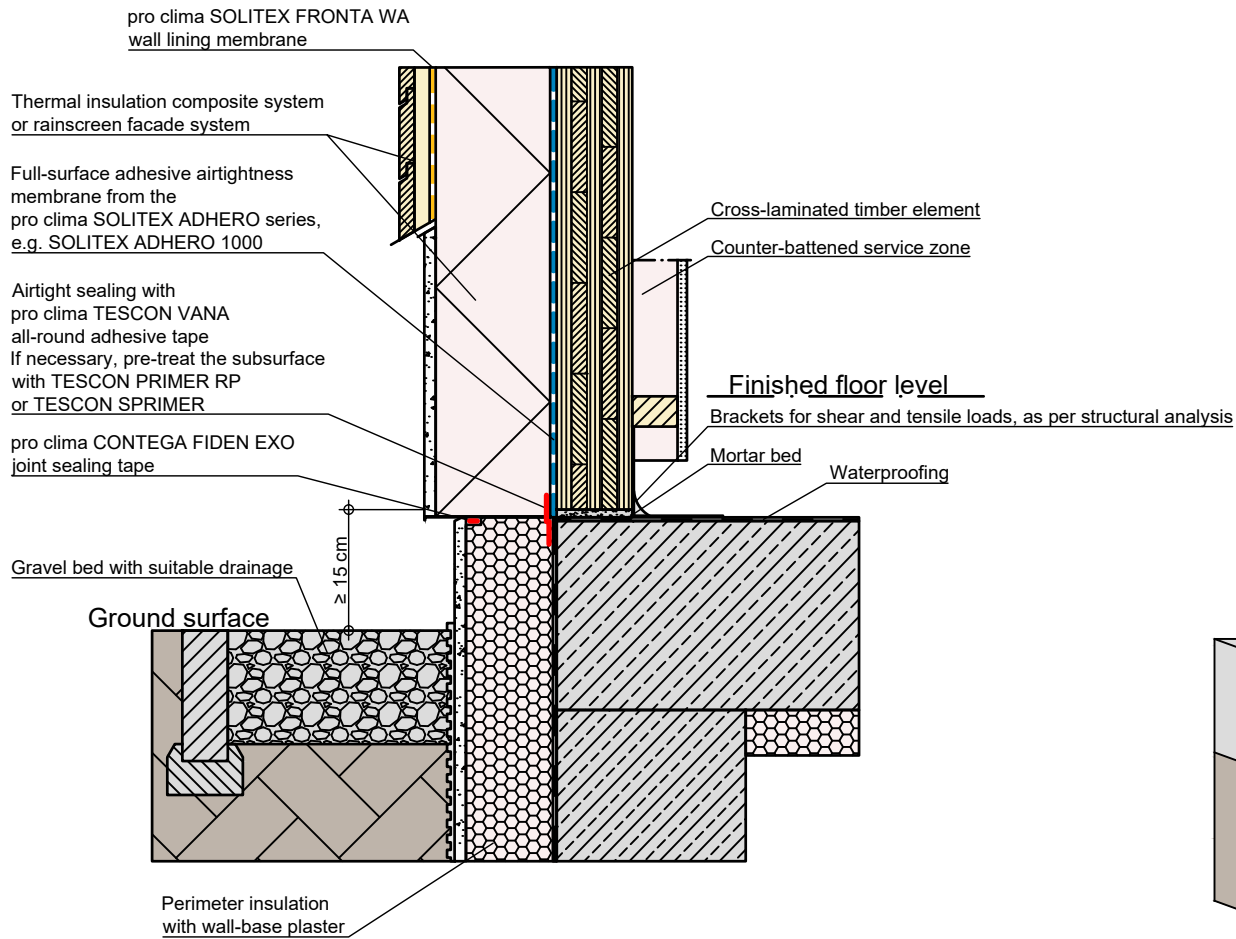


Solid timber construction | Joint at base | 15 cm above ground surface | Var. 1

Variant 1: Airtight sealing on the outside with pro clima TESCON VANA. The cross-laminated timber elements must be manufactured to be airtight.

pro clima ... and the insulation is perfect



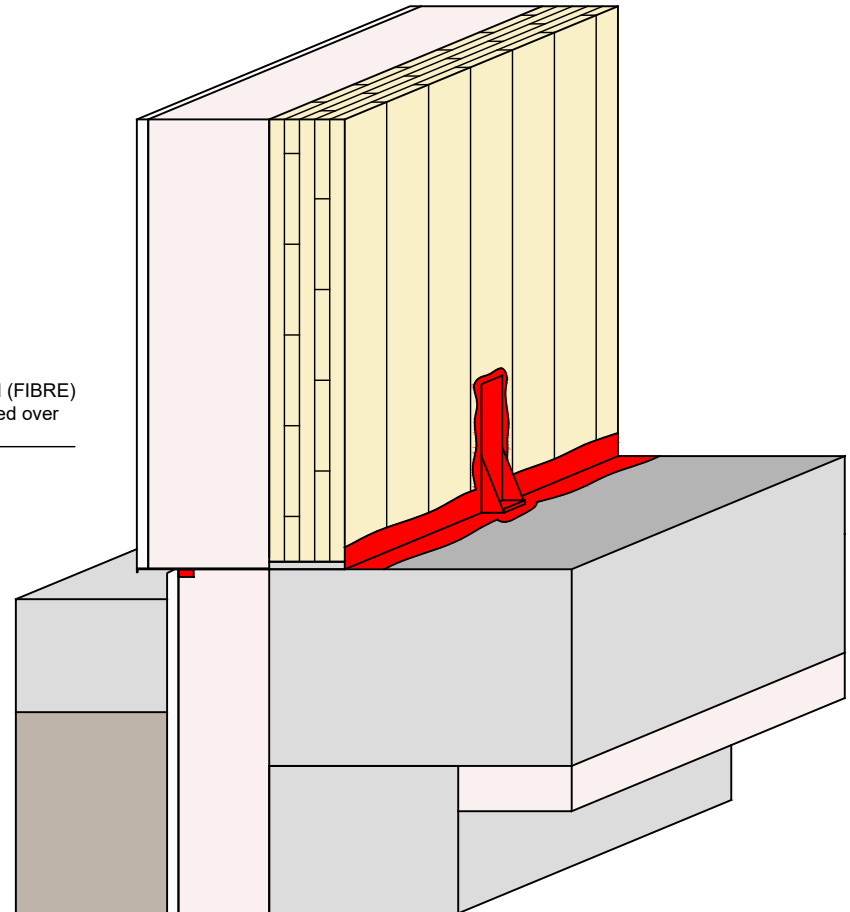
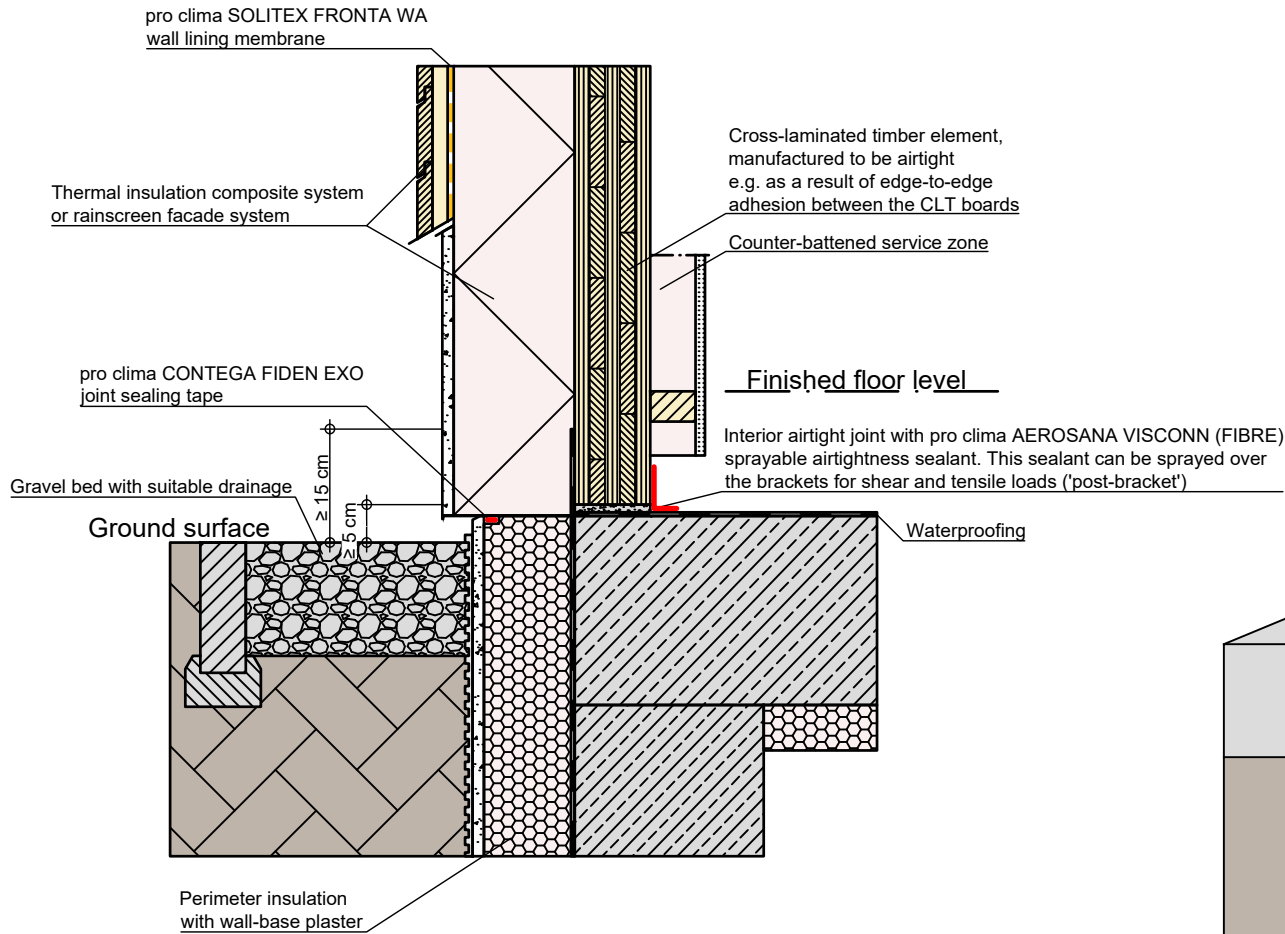


Solid timber construction | Joint at base | 15 cm above ground surface | Var. 2

Variant 2: Airtightness with pro clima SOLITEX ADHERO on the exterior side of the cross-laminated timber element

pro clima ... and the insulation is perfect





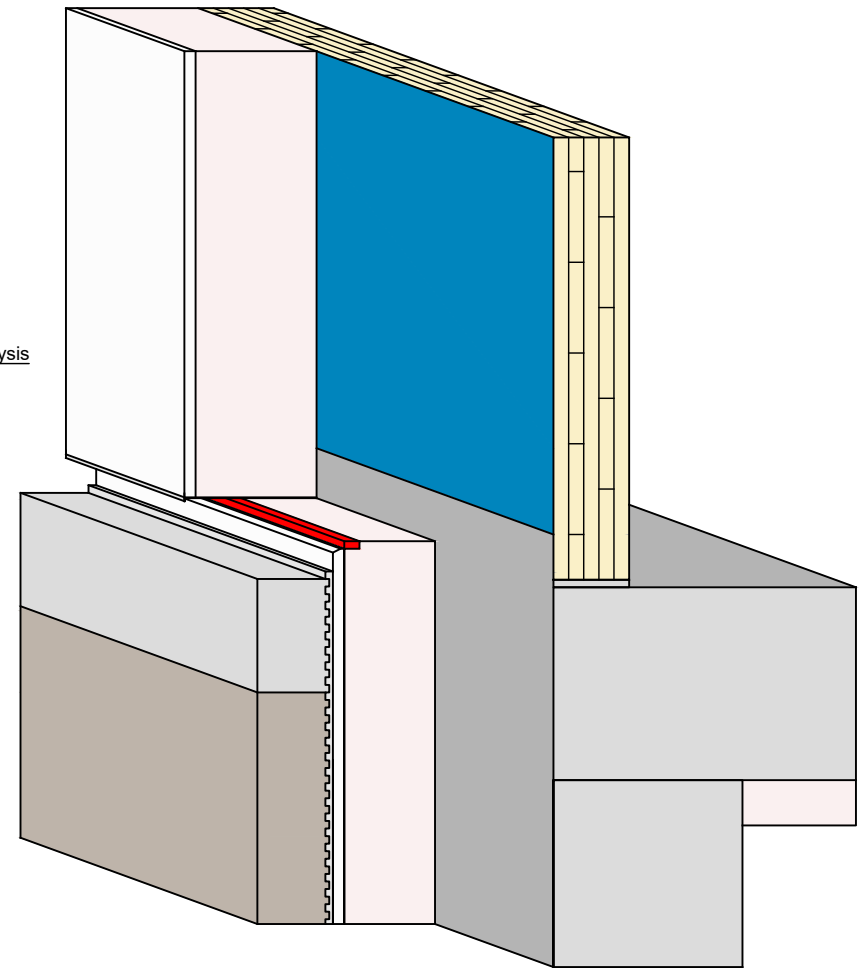
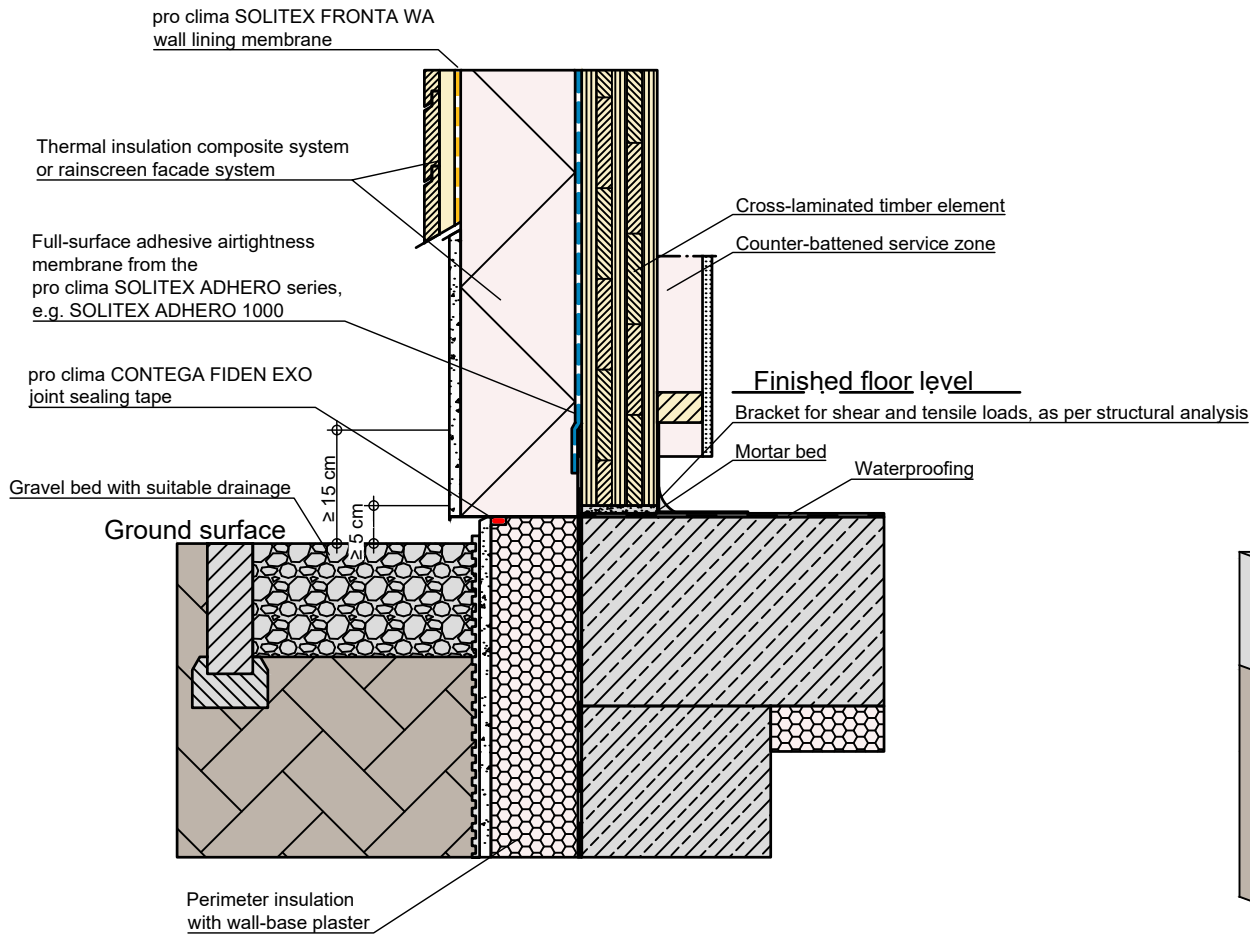
Solid timber construction | Joint at base | 5 cm above ground surface | Var. 1a

Variant 1a: Airtight sealing on the inside with pro clima AEROSANA VISCONN. The cross-laminated timber elements must be manufactured to be airtight.

pro clima ... and the insulation is perfect



Typical structural situation to illustrate the airtightness and windtightness layers. When carrying out planning and performing installation on site, please observe the currently applicable technical regulations and the relevant pro clima recommendations for applications and installation. (German version: 09/21; international version 03/23).

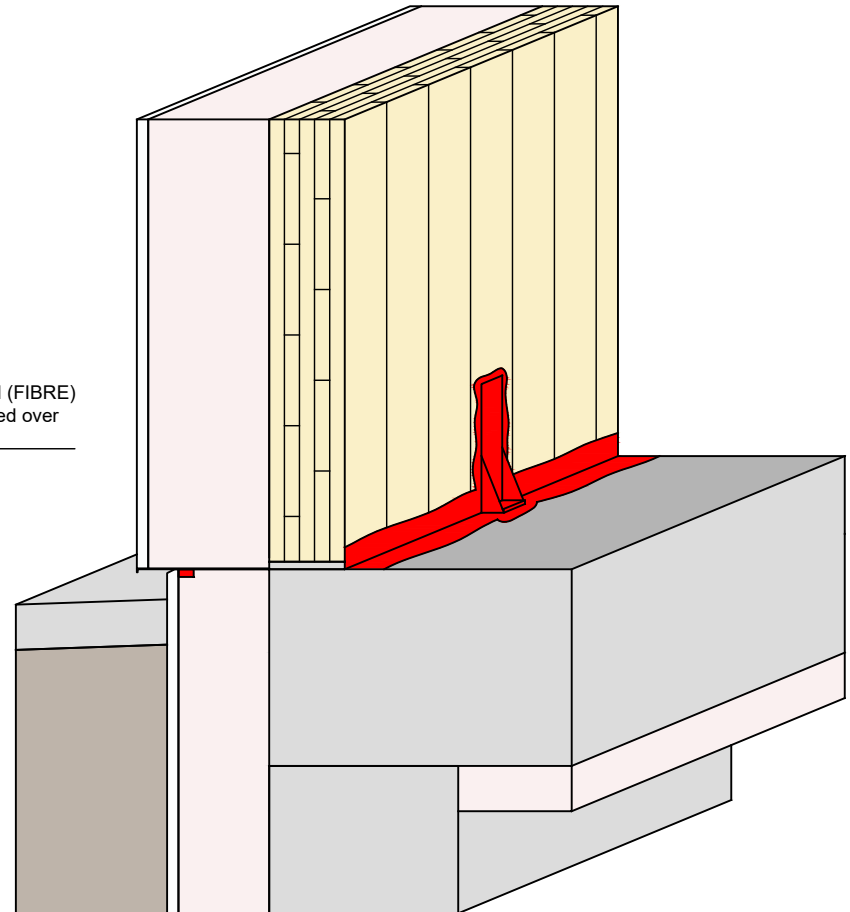
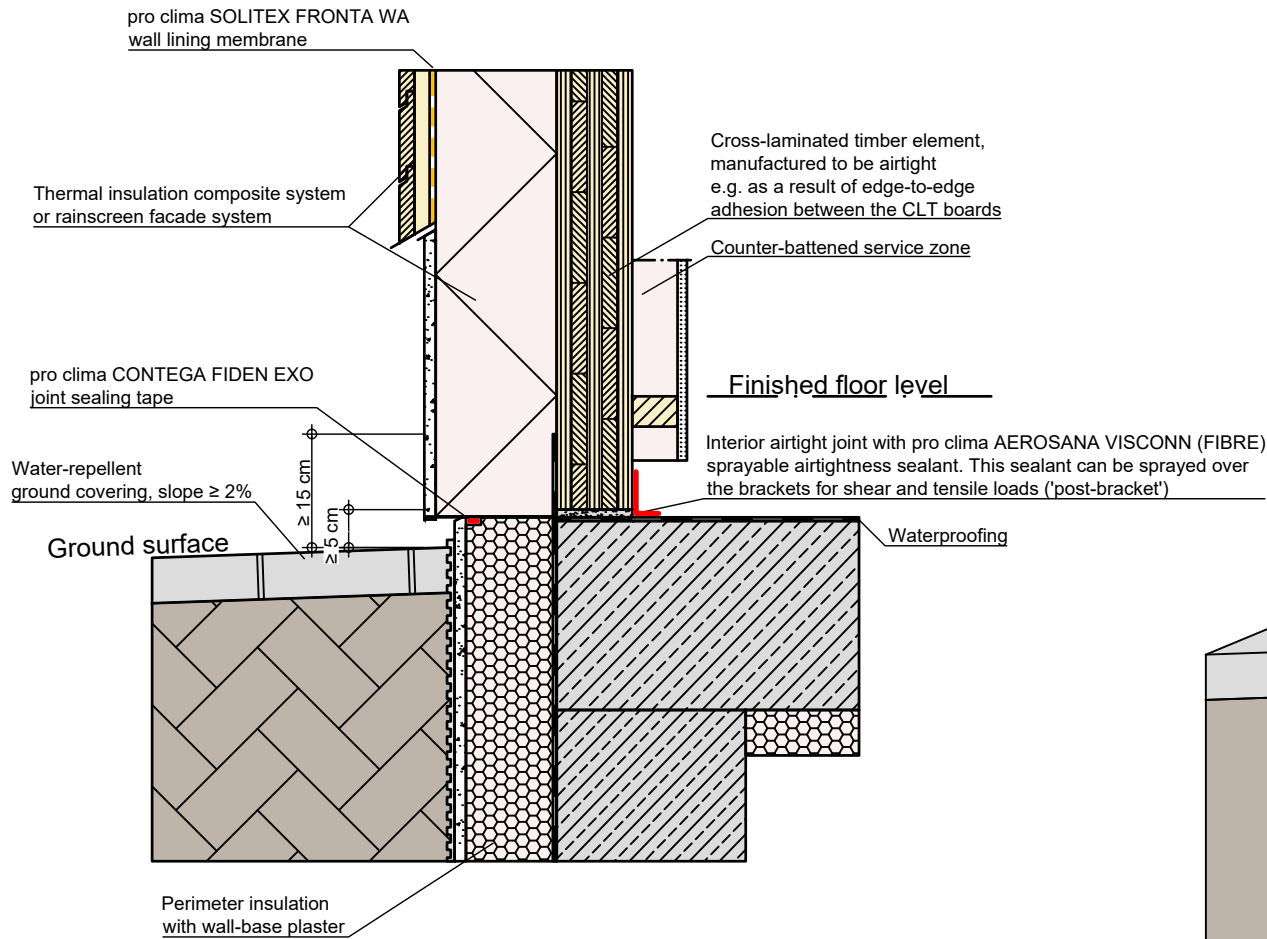


Solid timber construction | Joint at base | 5 cm above ground surface | Var. 2a

Variant 2a: Airtightness with pro clima SOLITEX ADHERO on the exterior side of the cross-laminated timber element.

pro clima ... and the insulation is perfect





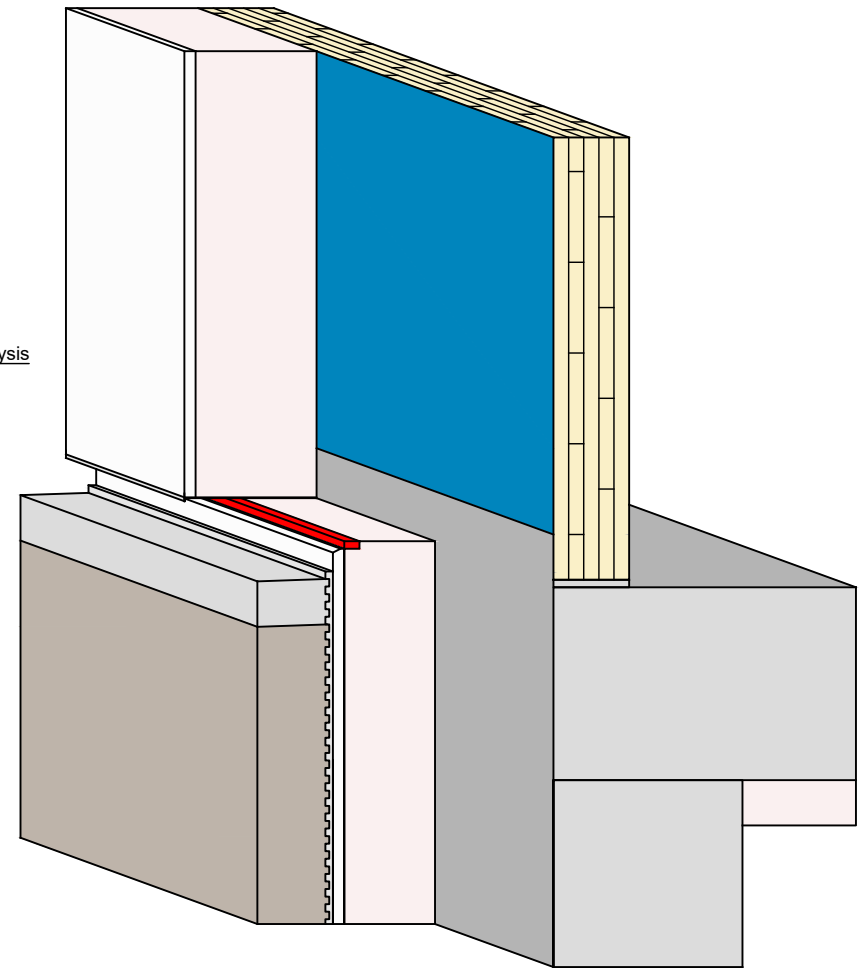
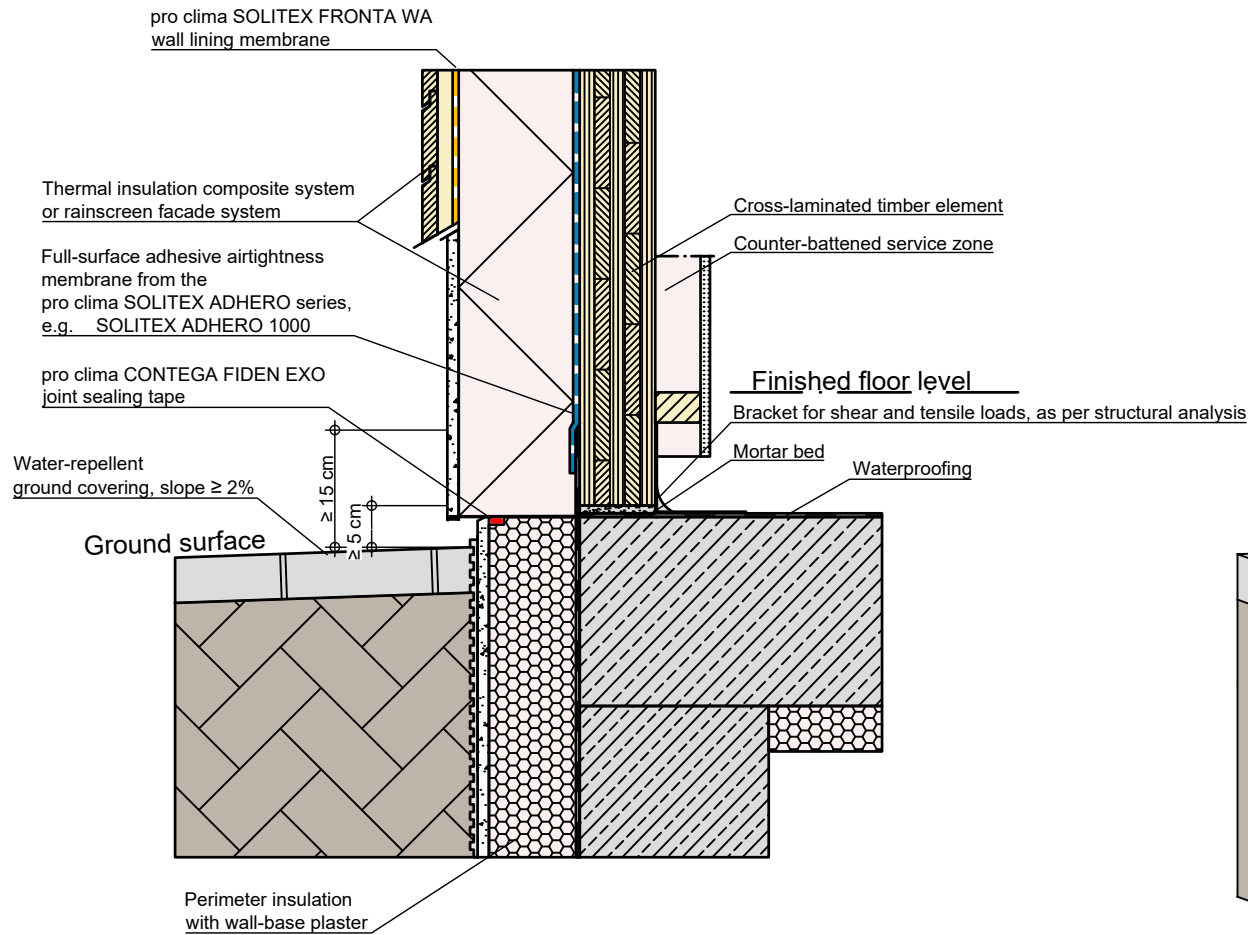
Solid timber construction | Joint at base | 5 cm above ground surface | Var. 1b

Variant 1b: Airtight sealing on the inside with pro clima AEROSANA VISCONN. The cross-laminated timber elements must be manufactured to be airtight.

pro clima ... and the insulation is perfect



Typical structural situation to illustrate the airtightness and windtightness layers. When carrying out planning and performing installation on site, please observe the currently applicable technical regulations and the relevant pro clima recommendations for applications and installation. (German version: 09/21; international version 03/23).



Solid timber construction | Joint at base | 5 cm above ground surface | Var. 2b

Variante 2b: Airtightness with pro clima SOLITEX ADHERO on the exterior side of the cross-laminated timber element.

pro clima ... and the insulation is perfect

